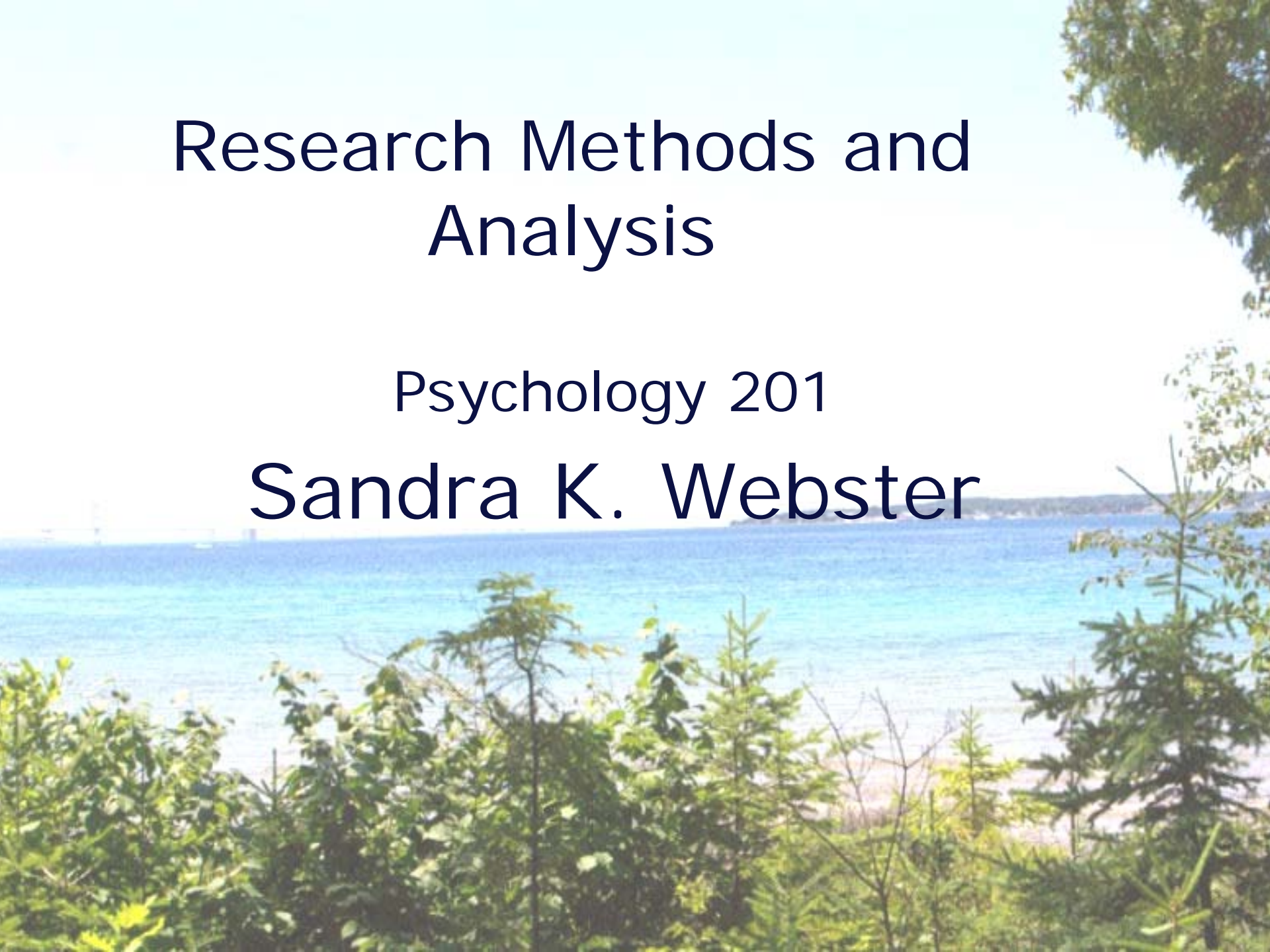


Research Methods and Analysis

Psychology 201

Sandra K. Webster

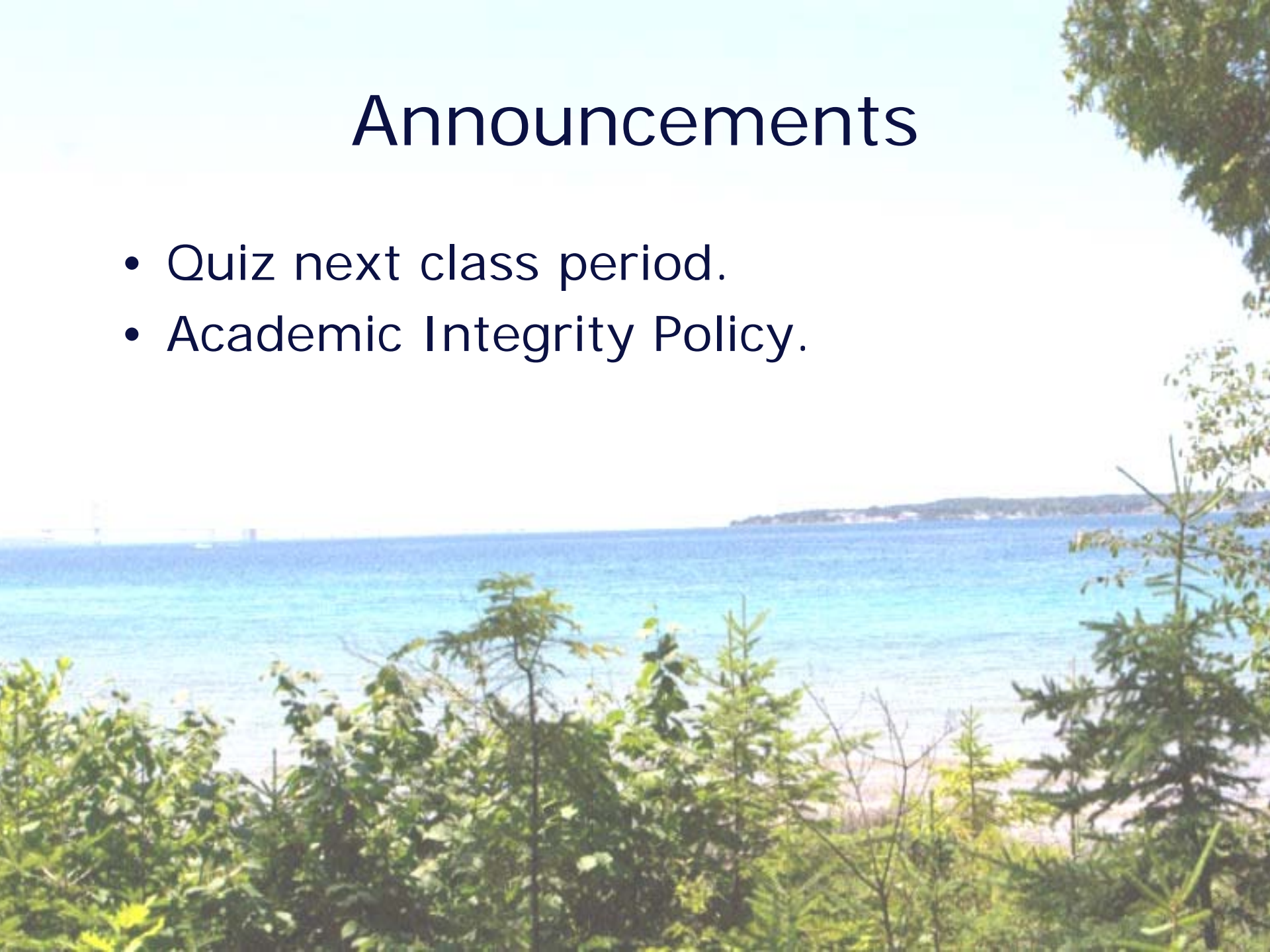


Survey

Please complete the survey. It will help determine the level, pace and content of the course. Responses will be used for class examples as well.

Announcements

- Quiz next class period.
- Academic Integrity Policy.



Meet the Prof

- See my [homepage](#)
- Expectations
- Questions?

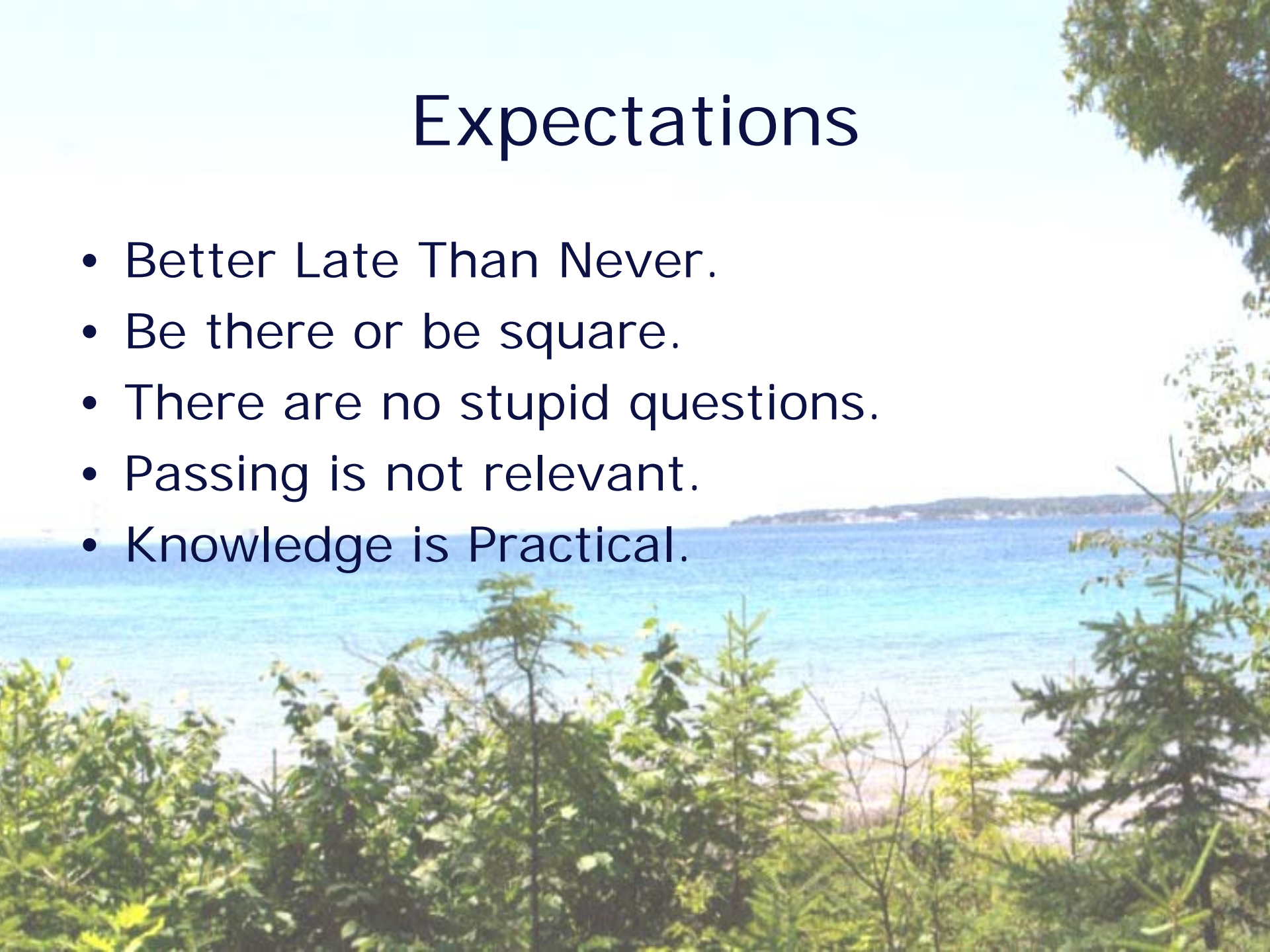


Meet the Class

- Find someone that you don't know.
- Spend three minutes finding out something interesting about the person that you don't think everyone else will know.
- Introduce your partner to the class.

Expectations

- Better Late Than Never.
- Be there or be square.
- There are no stupid questions.
- Passing is not relevant.
- Knowledge is Practical.



Course Web-site

- Syllabus
- Discussion List
- Resources
- Daily Class and Lab

Vive le
Cyberspace!



Other Resources

- Text
- SPSS
- E-mail
- MS Office
- Internet
- Titan Net - R:

APA Style Pretest Assessment

- Please complete the pretest assessment to the best of your ability.
- The scores will not count on your grade.
- They will be used to assess the new PIE challenge strategies.

Exit

Return to

- [Psy 201 Web-site](#)
- [Psy 201 Bulletin Board](#)
- [Psy 201 Resources](#)
- [What's New](#)

